



2019年焦煤周报

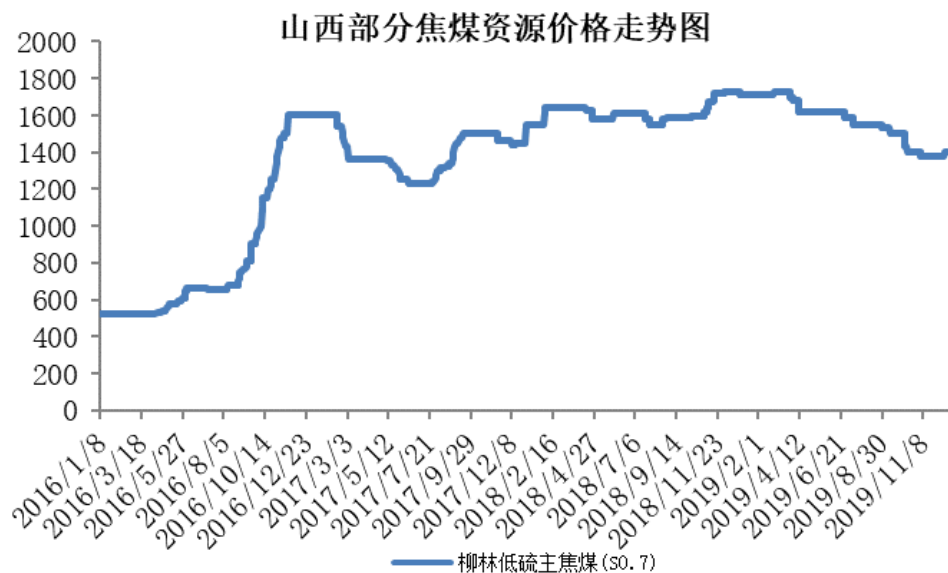
一德期货杭州营业部

▶ 市场心态及预期

现货预期走势	盘面走势	操作建议	市场预期
稳中小涨	震荡盘整	观望	近月交割大战即将开始，远月则受海运煤压制，一直偏弱运行，在01交割完成前，建议观望

5月运费估算	5月坑口价格估算	5月仓单价格估价
190-210	1110-1190	1300-1400

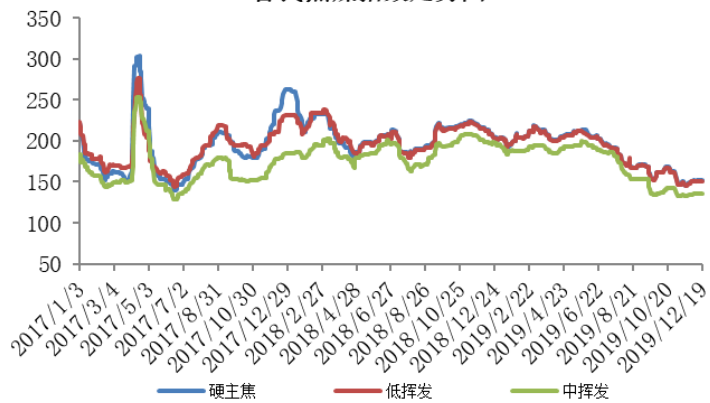
国内价格走势



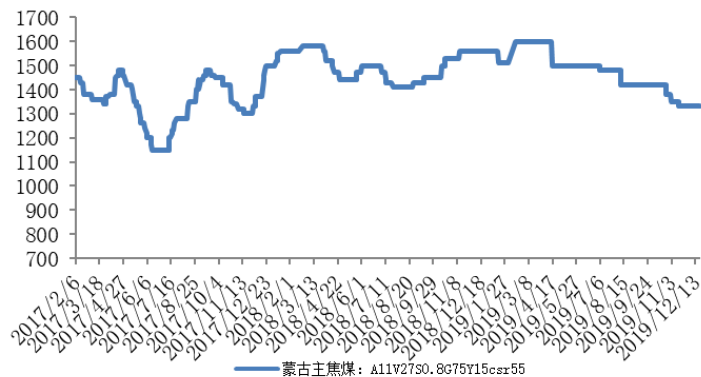
品种	指标	价格	涨跌	价格类型
山西长治瘦精煤	A9.5 V11-16 S0.5 G20	1050	-	地销承兑车板挂牌价
河北邯郸主焦煤	A10 V28 S0.8 G90	1505	-	地销挂牌含税承兑价
山东济宁气精煤	A9 S0.7 G60	930	-	车板含税承兑价
山西吕梁主焦煤	A9.5 V20 S0.6 G88	1400	+20	车板承兑含税价
山西临汾主焦煤	A10.5 S0.5 V18-22 G85 Y16	1410	+20	车板承兑含税价
山西介休主焦煤	A10.5 V25 S1.5 G80 Y14	1150	-	车板承兑含税价

进口价格走势

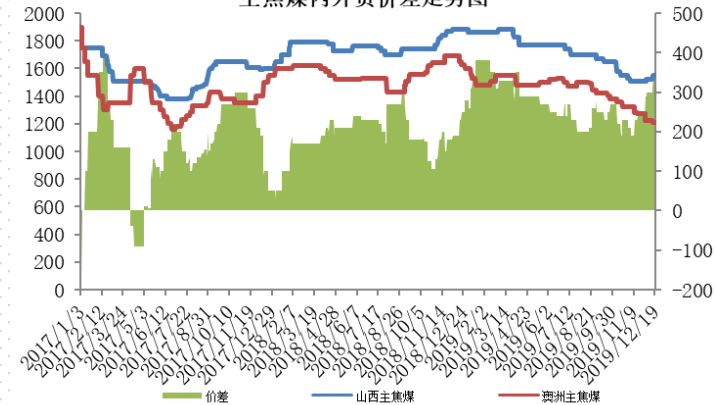
普氏焦煤指数走势图



蒙古主焦煤沙河驿自提价走势图

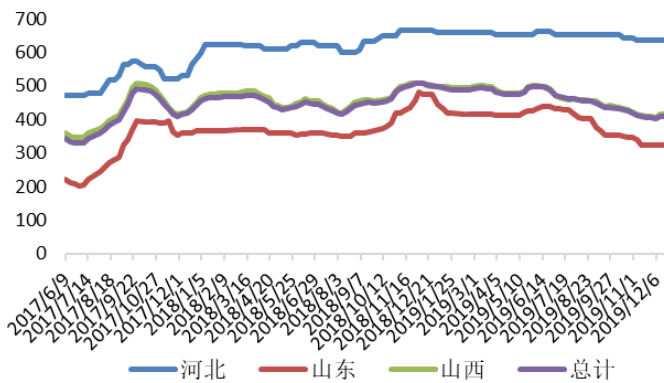


主焦煤内外贸价差走势图

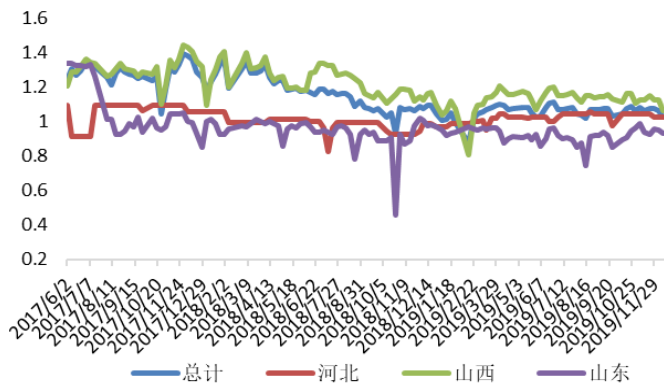


国内供应情况

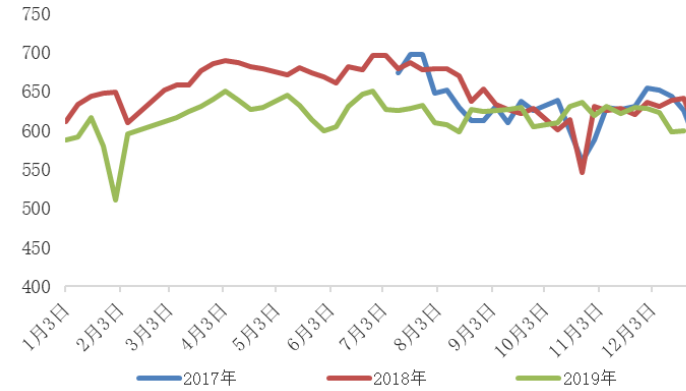
炼焦煤企业利润统计图（汾谓）



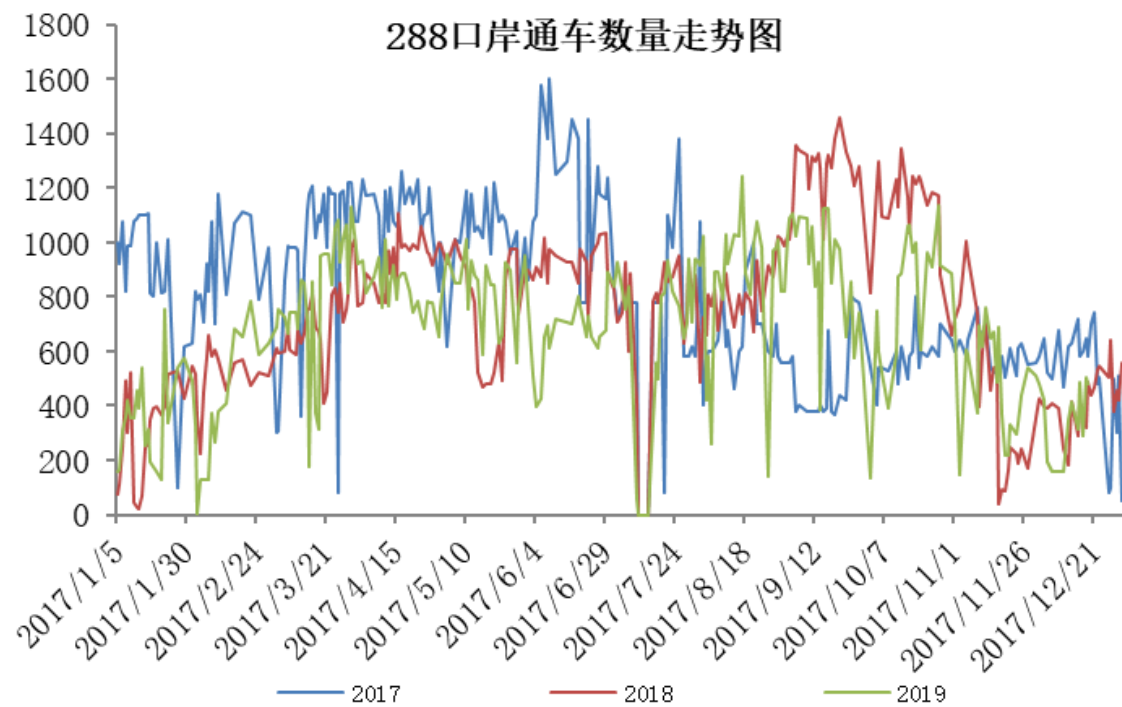
炼焦煤企业开工率统计（汾谓）



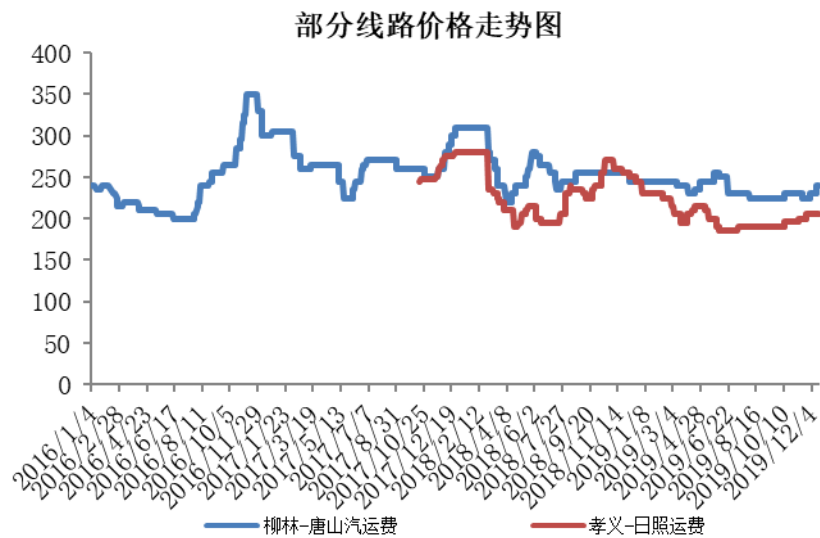
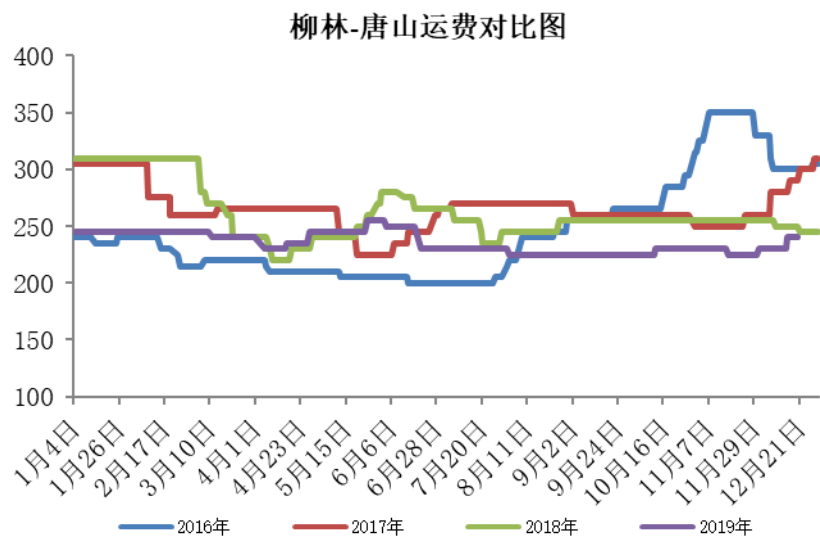
炼焦煤企业原煤产量（汾谓）



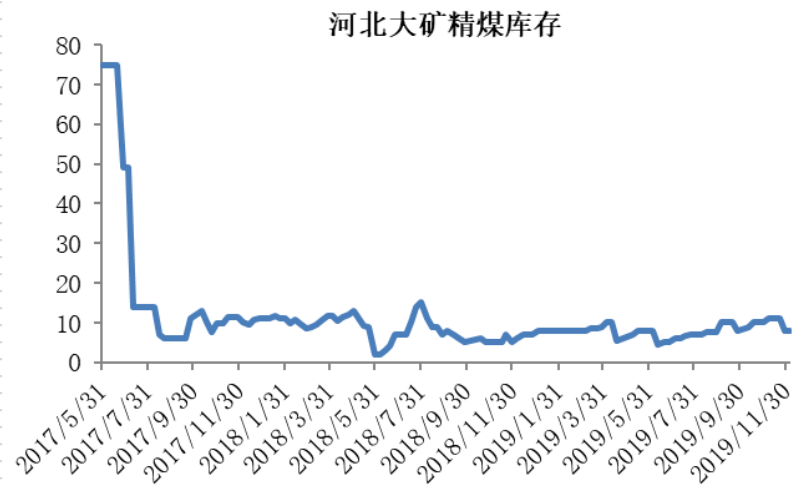
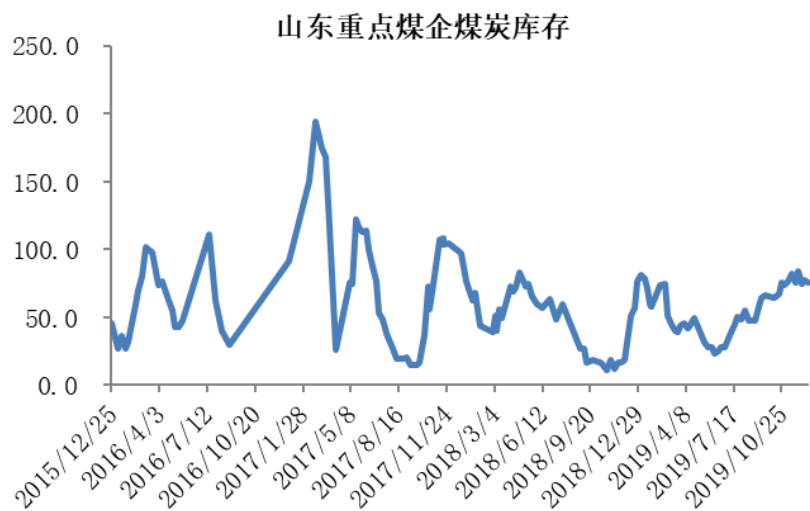
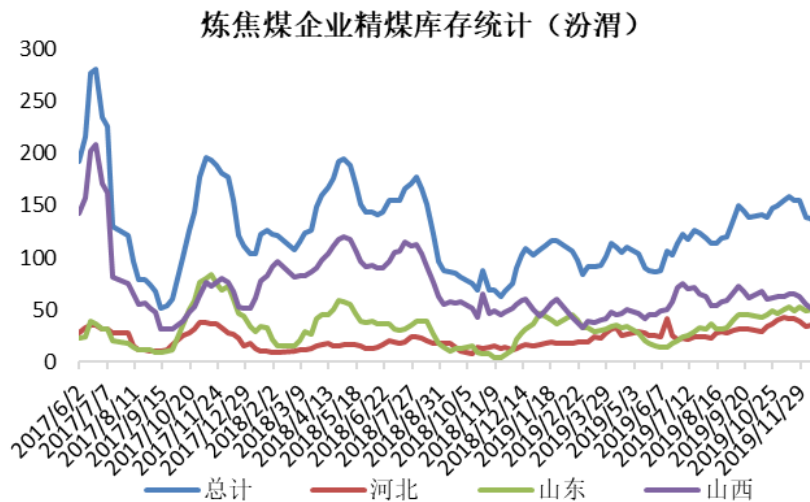
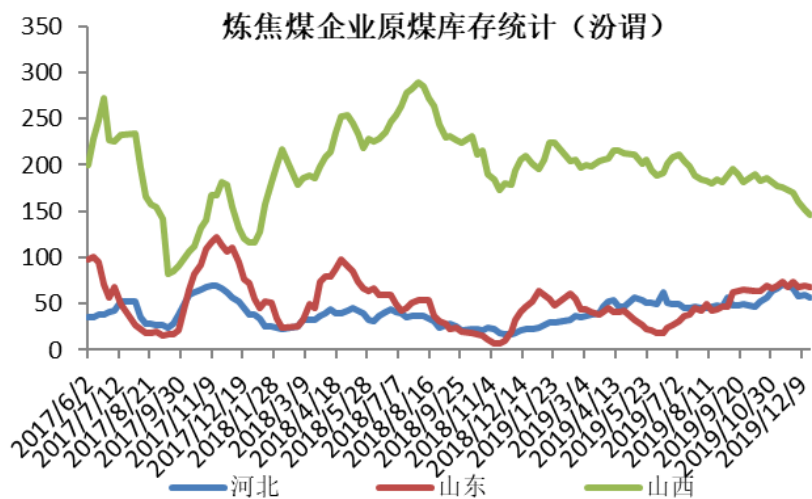
蒙古进口情况



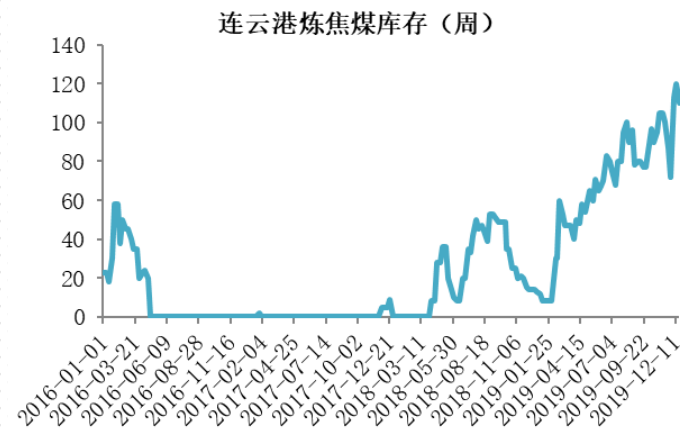
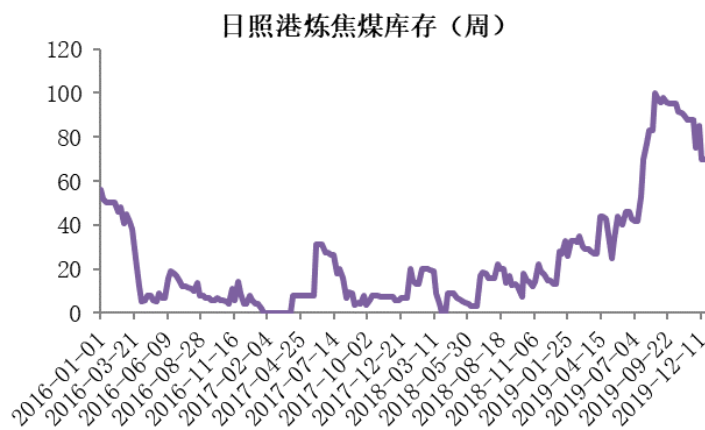
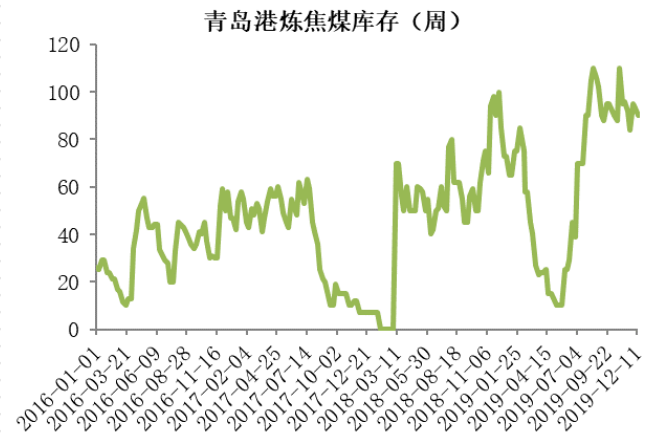
运费情况



各环节库存情况

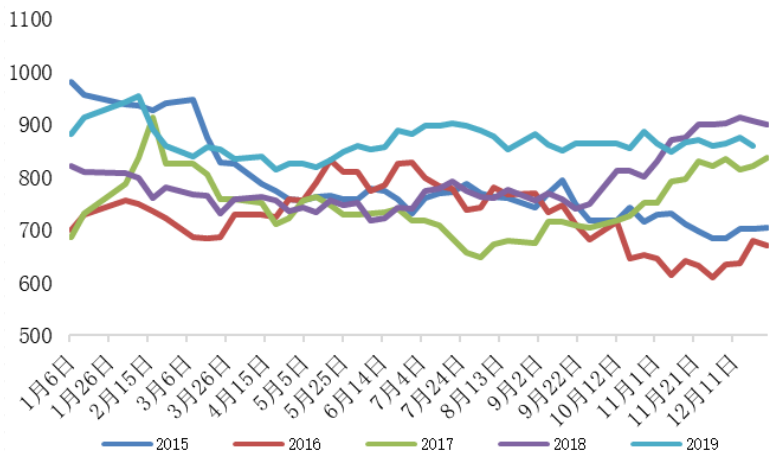


各环节库存情况

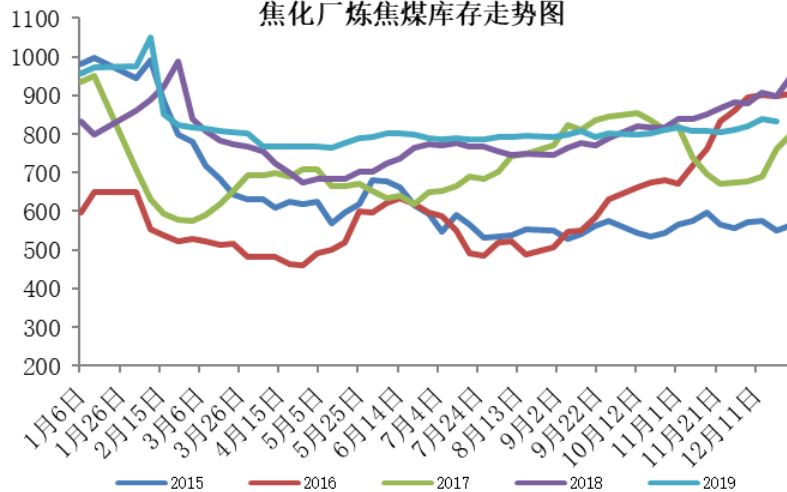


需求情况

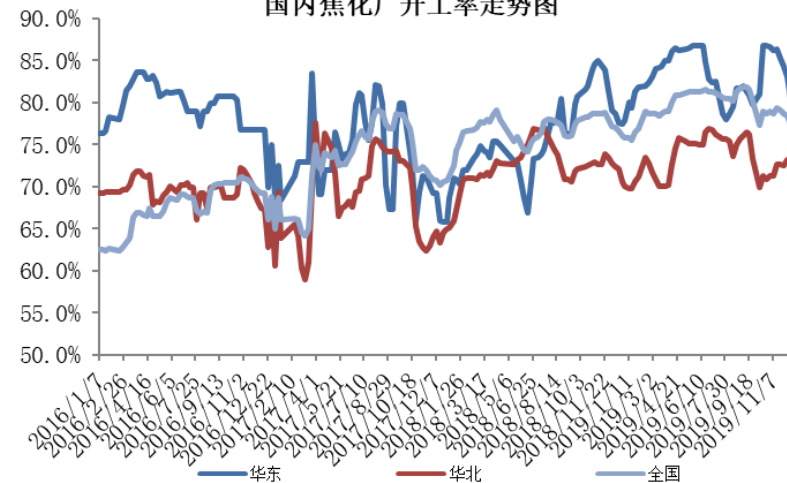
钢厂炼焦煤库存走势图



焦化厂炼焦煤库存走势图



国内焦化厂开工率走势图



► 基差

煤种	仓单价格 (元/吨)	01基差 (20日)
澳洲中挥发	1100	-135
蒙古煤	1365	130
山西单一煤	1395	160
山西简混	1280	45

一德，
与你共成长

THANKS FOR WATCHING

4007-008-365